



# SHARE of McLEAN

Happy Spring 2024

## Spotlight

### Spotlight on Our Community

Anyone following the news these days would think the world is a pretty hopeless place. A look closer to home, however, shows that our community has a heart full of kindness and boundless generosity. Here's a sampling of recent "random acts of kindness" that have benefited Share and its clients.

#### *Filling our Pantry Shelves*

An anonymous donor dropped off 1,000 (!) cans of assorted vegetables to Share before the Thanksgiving holiday! Can you imagine how many families that one donation helped? Utterly amazing and inspirational!



*Photo credit: Radhika Samant*



**Lynn Heinrichs**, State Farm agent in McLean, made a very kind donation to Share! The money will go a long way in filling our food pantry during these cold winter months.

*Photo credit: Radhika Samant*

Thanks to **Trinity UMC, McLean** for stopping by to take a tour of Share's food and clothing rooms and to provide food donations that helped stock our shelves during the winter months! We appreciate the partnership we have had over the years!



*Photo credit: Radhika Samant*

#### *Crafting with Compassion*



Warming our hearts as well as our clients, members of the **Knitting Club at Lewinsville Senior Center in McLean** dropped off beautiful handmade adult and children's hats for Share's clients. Thanks to this extraordinarily talented group for their kindness and generosity! And thank you to volunteer **Cheryl Kelly** for knitting these hats for Share clients - they look beautiful, warm, and one of a kind!

We are so fortunate to have generous and gifted members of our community!

*Photo credit: Laura Rees*

### *Yummy Treats for our Clients*

Two moms with the **Cake4Kids** chapter in our area baked these beautiful cakes for our clients' children. Such a wonderful contribution to our community. Aren't these cakes just adorable??



*Photo credit: Nicki Watts*



Wow, to Girl Power! Thanks to **Natalie Hein**, 1st grader and a Daisy Scout in Troop 50312 at Franklin Sherman Elementary School, who collected 68 boxes of Girl Scout cookies from her generous community to donate to Share! Keep up the splendid work, Natalie!

*Photo credit: Radhika Samant*

Thank you, **Saint Luke Catholic Church** in McLean, for your donation of birthday gift bags that include a card, cake mix, candles, and other items to make a birthday even more special!



*Photo credit: Mimi Granados*

Chick-Fil-A Tyson's West located at 8461 Leesburg Pike organized a canned food collection drive and contributed the proceeds to Share of McLean! We are honored that this was the inaugural event for your store, and we hope this will become a lasting partnership.



*Photo credit: Pam Donahoe from Chick-Fil-A*

A McLean neighbor generously donated his lemonade stand earnings of \$109 to Share! With a table, a pitcher of lemonade, and two trusted friends, he raised funds to make a difference in the community. His selfless act serves as a reminder that even the smallest gestures can make a big impact on the lives of others. And look at those *smiles!*



*Photo credit: Katie Arnholt*

Feeling inspired by these tales of your neighbors' contributions to our community? Think about organizing a food drive in your neighborhood, provide power packs, and helping with our back-to-school supply drive! There's something for everyone, and every age group, including projects for teens looking for service hours. If you are interested in volunteering, please visit this [link](#).

## Updates from Share's Tech Team

Many thanks to our high school technology volunteers from Langley and McLean who have allocated time from their busy schedules since February. To date, we have distributed over 70 laptops donated by corporations and individuals. In addition to hardware projects, our volunteers also help with software needs, such as improving Share's website, volunteer registration form, furniture scheduling, and furniture inventory system. Recently, we welcomed two new volunteers from Flint Hill and McLean to our team! We are always looking for laptops; if you have any to donate, please visit <https://www.shareofmclean.org/technology> for further instructions!

## Celebrating the Holidays!



A very warm thanks to **BASIS Independent McLean School** for their extremely generous donation of Giant, Target, and Safeway gift cards to Share over the holidays!! Our neighbors in the McLean and Great Falls area also gave so freely to the Giant Holiday Tree Gift Card Drive during the month of December! Finally, we are so grateful to **Franklin Sherman Elementary (FCPS) PTA**, for your very generous donation from the Mitten Tree Gift Card Drive! The gift cards to local grocery stores will go a long way in helping Share's clients this year. It is a wonderful concept to have the children take a mitten from the "Mitten Tree" in the school lobby and purchase the requested gift cards. A special thanks to Katie S. for organizing the event that significantly overachieved the donation amount from the previous year!

*Photo credit: Katie from Franklin Sherman*

SHARE was made holiday-festive through the help of some of our partners. We thank the team from **McLean Presbyterian Church** for bringing and serving breakfast foods and streaming holiday music to brighten the morning for our clients during one of their Saturday shopping days, and **McLean Starbucks** donated coffee!



Share volunteer and McLean High student **Martina** distributed the many toys she collected in her Fall Toy Drive to the delight of clients' children.

"It takes a village" and we're glad to spread holiday cheer with our valued partners!

*Photos credit: Robyn Smith*

## Eddie Bauer Partnership

We are so grateful for our partnership with Eddie Bauer, and Roxana, the manager of the Tyson's location, which has resulted in generous donations of warm coats and other items for a number of years. We are excited to announce that Omel, the manager of the store in Fair Oaks, worked with Roxana to expand Eddie Bauer's outreach. When Omel became the manager of the Fair Oaks store, she told her district manager that she wanted to follow Roxana's lead and donate items to Share. Thank you Roxana, Omel, and

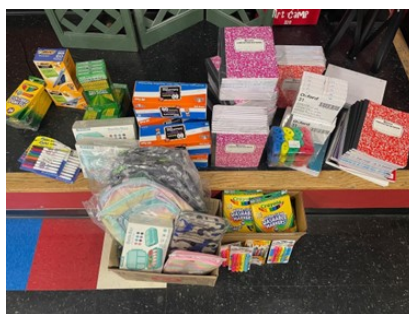


## Share's Furniture Program



Share's Furniture program needs small dining tables and matching chairs, square or round, that seat 2-6 people. If you can help, please contact the furniture hotline at 703-448-1054. For more information about the Furniture Program, please visit our [furniture page](#). Thank you for your donations!

## Back to School Supply Drive



Does the warmer weather make you think of school being out and lazy days by the pool? Well, not at Share! We are busily preparing for next year's back to school, and could use your help. Every year in August, the Back to School Team distributes school supply kits and gifts to our families with children. The students love getting new supplies to start the school year. College students also receive a small kit, gift, and are eligible to be reimbursed for their textbooks.

We are so very thankful for our generous corporate and private donors who make this program possible. The students at [The Country Day School](#) in McLean started this year's collection efforts with a school supply drive that will set up our clients' children for a successful school year!

The next time you're at Staples or Walmart, grab a few extra items to help our next generation get a great start on their school year. A list of our most needed items can be found [here](#). Donations can be dropped in the shed outside door 8 at the McLean Baptist Church. We accept new school supplies throughout the year.

## Stuff the Bus Success!

The "Stuff the Bus" event at the McLean Giant was a big hit, even with the

rainy weather. Almost 1600 pounds and 83 boxes were collected as well as cash and gift cards! WOW!! Thanks to Fairfax County for organizing the event; to the amazing staff at Giant for helping shoppers find items quickly; our longstanding partner, The Rotary Club of McLean, for their generous donation of Giant Gift cards; to our wonderful Share team who coordinated the activities; and to all the hard-working volunteers from New Dominion's Women's Club and across our neighborhood for giving up their Saturday to help fill Share's pantry! And, as always, thanks to the community for generously donating items to help others in need.

*Photo credit: Radhika Samant*



## Recognizing Two of Our Long-Term Volunteers



On January 9th, Share president Steve Mournighan dedicated the Clothing Room in recognition of **JoAnn Kelleher** of McLean. JoAnn is an original volunteer, having been at the meeting in 1969 when Share was formed. Over the years, JoAnn has been on Share's Board of Directors and has volunteered in several of Share's programs, always having a smile when assisting those in need. In recent years she has focused on the Clothing Room, being an integral part of the team who organizes the room weekly for client shopping. Thank you, JoAnn, for your many decades of dedicated support!



Steve Mournighan also dedicated the Information Technology Room to long-time Share volunteer, **Harry McAlpine**. Harry focused for many years on Share's Transportation Program, providing rides to seniors who needed to get to medical appointments or helping them with other urgent needs. Harry successfully transitioned the program to Shepard's Center of Northern Virginia ([scnova.org](http://scnova.org)) and then moved on to support the Food Pantry by picking up food donations, stocking shelves, and assisting clients with their needs. Harry will be greatly missed.

*Photos credit: Radhika Samant*

## Get Involved

### Food and Clothing Pantry



#### Food Pantry Needs

The pantry is our most visible program. Each neighbor may visit the pantry twice a month and choose the food and clothing they need. This service relies on community members' food drives and independent donations as the pantry goes through **over 900 bags of groceries a month!**

If you would like to donate to the food and clothing pantry, please see the list of our most needed items on the right. Donations can be dropped off in person or placed



#### Food and Clothing Pantry \*Most Needed Items\* currently:

- Canned fruit
- Canned chicken and fish
- Canned beans (kidney, garbanzo, pinto)
- Canned diced tomatoes (15 oz.)
- Pasta (elbow, penne, etc.)
- Ramen noodle packets
- Macaroni and Cheese
- Snacks/bars/crackers (granola bars, etc.)

- Pull-Ups (Size 4T-5T)
- Diapers (Size 6)
- Toilet paper
- Paper towels

in the outside storage bins located next to the side entrance at any time.

**\*\* Please: no glass, no over-sized items, and no items past Best if Used By/Before date.**

Current most needed items are listed in the opposite column. For the most up-to-date list please visit this [link](#).

Deodorant

Toothbrushes (individually wrapped) and toothpaste

New socks and new underwear for children, women, and men

We accept refrigerated and frozen foods such as chicken, eggs, yogurt, and cheese on Wednesdays and Saturdays, between 8:30 - 12 noon, or thru prior arrangement by emailing [sharevolunteers1367@gmail.com](mailto:sharevolunteers1367@gmail.com).

## Senior Shopping Days

Share opens our food and clothing pantry on the first and third Thursdays of the month, from 9:00 to 11:00 am, for two of the senior citizen residences in McLean, as well as neighborhood seniors (55+ years old).

---

## Mark your Calendars

- Open to everyone! The next board meetings (open to all) May 9 and June 13, 7:30 pm. Please send a note to [randy@shareofmclean.org](mailto:randy@shareofmclean.org) for the meeting link.
- Distribution of Back-to-school supplies: August 5 - 19

More information about Share activities is available on our [calendar](#)

## Curious about Share?

Ever wondered how Share began? Or where your donations of food and clothing go? Want a virtual peek inside the rooms where our clients can select food, clothing, and other essentials? Take a look [here](#) for all that information and more!

## Donate

Share relies entirely on donations. We do not receive any county, state, or federal funding. Please consider making a tax-deductible gift using the button below.

[Donate](#)

---

## Our Core Values

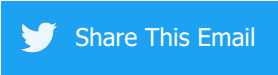
We value our clients and treat them with kindness, respect, and generosity.

We value our donors and are deeply grateful for their charitableness and partnership. We think of our volunteers as family and are inspired by their commitment and dedication.



### About Share

Share, Inc. is a non-profit organization, staffed by volunteers and supported by individuals, as well as a long-standing coalition of local religious and civic organizations, to help meet the essential requirements of our neighbors in need. For more information, please see our web site at [www.shareofmclean.org](http://www.shareofmclean.org) or contact us via email at [info@shareofmclean.org](mailto:info@shareofmclean.org).



Share, Inc. | P.O. Box 210, McLean, VA 22101 [www.shareofmclean.org](http://www.shareofmclean.org)

[Unsubscribe randy@shareofmclean.org](mailto:randy@shareofmclean.org)

[Update Profile](#) | [Constant Contact Data Notice](#)

Sent by [randy@shareofmclean.org](mailto:randy@shareofmclean.org) powered by



Try email marketing for free today!